



REACH-IN REFRIGERATORS



ITEM # _____

MODEL # _____

Model 1-1020, 1-1045 & 1-1070

Cabinet interior and exterior front, sides, and doors: stainless steel.

Model 2-2020, 2-2045 & 2-2070

Cabinet exterior front, sides, floor and doors: stainless steel.
Cabinet interior: heavy gauge aluminum.

Model 4-4020, 4-4045 & 4-4070

Cabinet exterior sides: heavy gauge anodized aluminum.
Cabinet front: stainless steel, except for aluminum ends that wrap around front.
Cabinet door and floor: stainless steel.
Cabinet interior: heavy gauge aluminum.

Standard Features

- Top mounted compressor and evaporator coil
- Expansion valve
- Hot gas condensate evaporator
- Cord and plug attached (self-contained only)
- Windrunner gradient air displacement process
- Exterior digital thermometer
- Self-closing cam-lift hinges
- Chrome-plated door handles with security locks
- 6 inch NSF adjustable legs
- Baked epoxy-coated shelves adjustable on 1 inch centers
- Concealed light switch
- Stainless steel pilasters
- Automatic defrost



Specifications

Cabinet - Cabinets are all metal, inside and out. The top, back, and bottom are made of galvanized steel. In addition, all seams are closed and sealed, with metal edges turned away from the exposed surface. The result is an integrated structural frame. Internal corners are covered to conform to NSF standards. Automatic interior lighting is controlled by a light switch concealed in the door hinge, except glass door models employ a manual switch.

Doors - Constructed of metal, refrigerator doors are self-closing and fully insulated. Their cam-lift hinges are chrome-plated and self-lubricating. Hinges also have a safety stop that holds the door open, preventing overswing. Chrome-plated pull handles have built-in cylinder locks. The full-perimeter, magnetic vinyl gaskets are removable without the use of tools. Doors easily lift off, and door perimeters have a built-in, low wattage, and anti-condensate heater. Door openings are protected by an impact-resistant, nonconduc-

tive PVC breaker strip with no exposed screws or fasteners.

Insulation - Cabinet body, doors, and evaporator coil housings are filled with pressure-injected polyurethane foam.

Interior Shelves - Three wire shelves per section are standard. Shelves have a runner spaced 3/4 inch O.C. with two reinforcing bars 8 1/2 inch O.C. Coated with 7 mils of baked-on gray epoxy. The shelves have a saline spray corrosion resistance of 600 hours. Shelves will support 250 pounds each with maximum cabinet load of 800 lbs. They are supported on stainless steel pilasters, and are adjustable on 1 inch centers. All three shelves are interchangeable and can be adjusted without tools or special parts.

Self-Contained Refrigeration - The complete refrigeration assembly is mounted on top of the cabinet behind a removable hatch cover.

Refrigeration components include a hermetically sealed compressor, thermostatic expansion valve, thermostatic temperature control, high-humidity evaporator coil and hot gas condensate evaporator. The system is balanced to maintain 38°F average internal air temperature. Windrunner gradient air displacement process provides even air flow and temperature control throughout the cabinet. All components are factory installed and tested, and supplied with an attached cord and plug (self-contained, 115 volt only less than 16 amps), master switch, and exterior digital thermometer.

Remote Cabinets - Standard remote units are provided with capped refrigeration lines, expansion valve, solenoid valve, electric condensate evaporator, and temperature control. Condensing unit is not included. All other features are the same as self-contained units, except power cord.

DIMENSIONS

	One Section	Two Section	Three Section
Net Capacity:	22.4	49	72
Width:	27.5"	55"	82.5"
Height: with legs or casters	84.5"	84.5"	84.5"
Depth: cabinet only - including controls	31.81"	31.81"	31.81"
Depth: over hardware - reach-in	34.81"	34.81"	34.81"
Depth: over hardware - pass-thru	38.44"	38.44"	38.44"
Depth: door open 90° - reach-in	57.81"	57.81"	57.81"
Depth: door open 90° - pass-thru	84.25"	84.25"	84.25"
Net Door Opening: width	21.25"	21.25"	21.25"
Net Door Opening: height - full doors	56.88"	56.88"	56.88"
Net Door Opening: height - half doors	27"	27"	27"
Adjustable Shelves	3	6	9
Shipping Weight:	Consult Price List	Consult Price List	Consult Price List

ELECTRICAL

	One Section				
Base Model Number*	20	20P	20GD	20PGD	
Compressor HP	1/3	1/3	1/2	1/2	
Voltage (60 hz, 1 ph)	115	115	115	115	
Total Amperage:	8.0	8.0	11.5	16.0	
BTU/HR**	2600	2600	3570	4600	
Cord connection - ANSI	5-15P	5-15P	5-15P	5-20P	
	Two Section				
Base Model Number*	45	45P	45GD***	45PGD	45XPGD****
Compressor HP	1/3	1/2	1/2	3/4	3/4
Voltage (60 hz, 1 ph)	115	115	115	208/230	208/230
Total Amperage:	10	12	16	15	17
BTU/HR**	2600	3570	4600	5580	5580
Cord connection					
- ANSI	5-15P	5-15P	5-20P	Perm. (3 wire + ground)	Perm. (3 wire + ground)
	Three Section				
Base Model Number*	70	70P	70GD	70PGD****	
Compressor HP	1/2	1/2	3/4	3/4	
Voltage (60 hz, 1 ph)	115	208/230	208/230	208/230	
Total Amperage:	13.3	11.6	15.3	14.4	
BTU/HR	3570	4600	5580	6590	
Cord connection - ANSI	5-20P	Perm.	Perm. (3 wire + ground)	Perm.	Perm.

Notes: (R) Remote cabinets are equipped for permanent connection.

*First 3 digits omitted.

**Based on 90°F ambient and 20°F evaporator.

Specifications subject to change without notice.

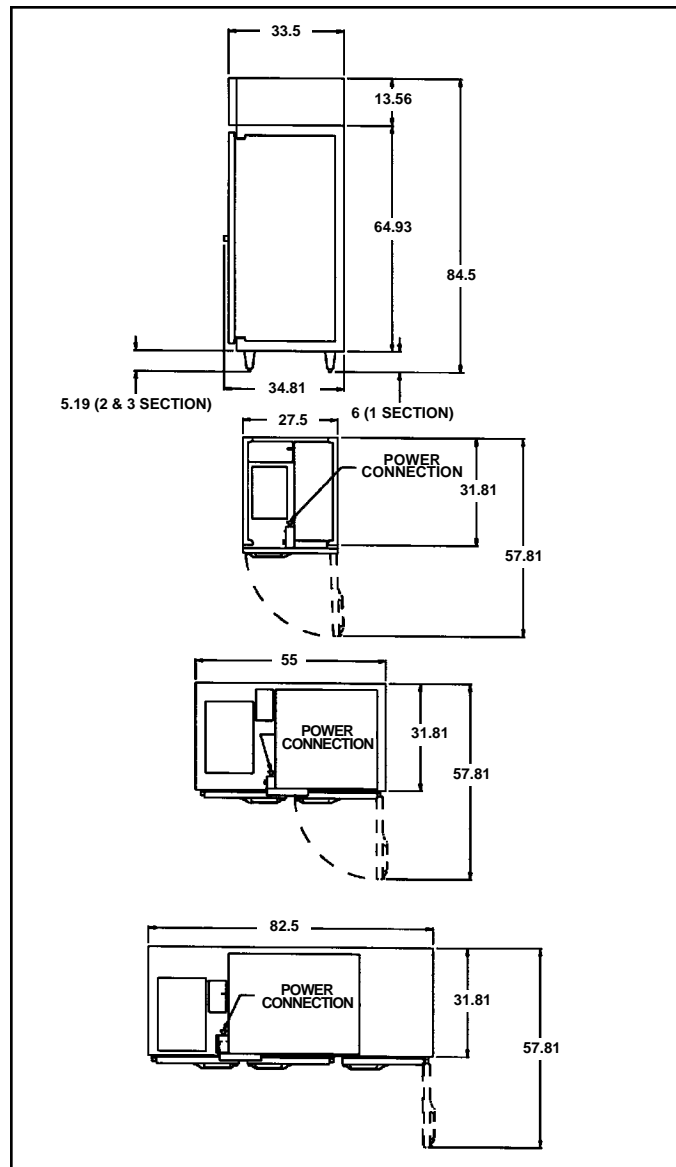
Certain options and accessories may affect UL/NSF approval and electrical requirements.

***Electric condensate pan not available on cord connected models.

****Model 45XPGD available. Model 45XP not available.

*****Six (6) half glass or three (3) full glass doors maximum.

REACH-IN REFRIGERATORS



Options

Model Suffix	Description
01	<input type="checkbox"/> Half height doors.
GD	<input type="checkbox"/> Hinged glass doors with horizontal 40 watt fluorescent lighting. (1 section only, 2 & 3 sections vertical.)
C	<input type="checkbox"/> Heavy-duty 6 inch casters (on cord connected models only).
A	<input type="checkbox"/> Audio visual alarm.
P	<input type="checkbox"/> Pass-Thru.
R	<input type="checkbox"/> Remote.
X	<input type="checkbox"/> Sliding glass doors (with vertical 40 watt fluorescent lighting) 2 section only
E	<input type="checkbox"/> Electric condensate evaporator.
	<input type="checkbox"/> Finished back.
	<input type="checkbox"/> Tray slides _____
	<input type="checkbox"/> Stainless steel shelves.
	<input type="checkbox"/> _____ extra epoxy coated shelves.
	<input type="checkbox"/> Left or right door hinge.
	<input type="checkbox"/> _____